



Impact resistant

High Tensile Strength Impact Resistant Straight Warp Conveyor Belt(SW)

Light

To compare with the belts having the same grade of the tensile strength, the SW belt provides 10%~20% less weight, power saving to minimize the load of conveyor accessories, so as to reach the efficiency of saving power sources and cost down.



Thin

Use one or two plies to replace the multi-ply construction make total thickness 7%~17% thinner, increase the strength of the adhesion and the flexibility. This can help the belt running smoothly under the smaller pulley. Each roll length can be 400~500m to reduce the waste.



Powerful

Use a special weave type of high-denier fiber to raise the tensile strength of the fabric, reduce the working elongation and replace the multi-ply construction belt.

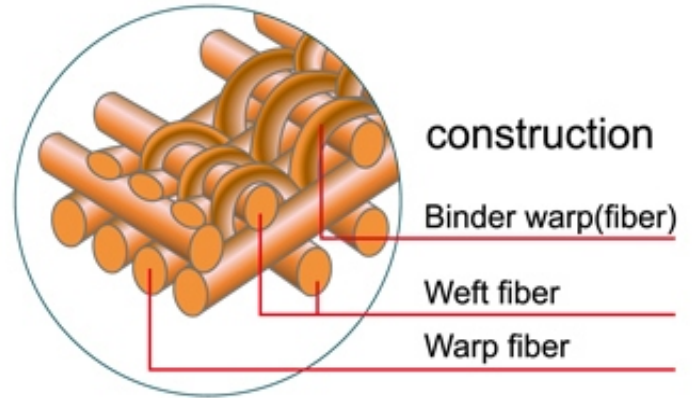
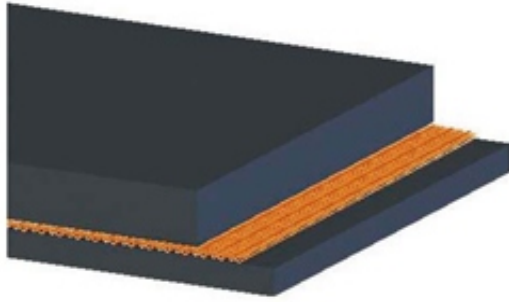


Tough

The special construction of the Straight Warp provides more impact absorption than EP or NN products, and increase the belt service life.



Product features and comparison



Features

Impact resistant	Strong adhesion	Good flexibility
Light weight	Stable working tension	High index number of troughing
Thin thickness	Low elongation	Longer roll length

Comparison

	SW fabric	EP fabric	NN fabric
Impact resistant	⊙	△	○
Light weight	⊙	△	○
Index number of troughing	⊙	○	○
Runnig stability	⊙	○	△
Adhesion	⊙	△	○
Elongation	⊙	○	△
Flexibility	⊙	△	○
Thickness	⊙	△	△
Smaller pulley	⊙	△	○
Fatigue resistant	⊙	△	○
Power saving	⊙	△	△
Longer roll length	⊙	○	○

⊙ : Excellent ○ : Good △ : Ordinary



Specification

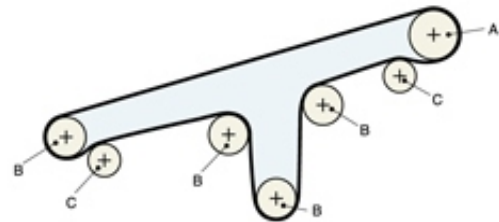
SW fabric × Plies	Strength (kg/cm · KN/M · N/mm)	Applicable rubber grade	Applications
SW400 × 1P	400 ↑	Abrasion resistant	Steel
SW600 × 1P	600 ↑	Oil resistant	Mining
SW800 × 1P	800 ↑	Flame resistant	Coal
SW1000 × 1P	1000 ↑	Cold resistant	Cement plant
SW400 × 2P	800 ↑	Heat resistant	Paper industry
SW600 × 2P	1200 ↑	Impact resistant	Port
SW800 × 2P	1600 ↑	Chemical resistant	Power plan
SW1000 × 2P	2000 ↑	Anti-Static resistant	Impact conveying
			Heavy industry

Rubber	Fabric	Width	×	Ply	×	Top cover	×	Bottom cover	×	Length
R240	SW800	1200mm	×	1 P	×	6mm	×	3mm	×	400M

Minimum pulley diameter

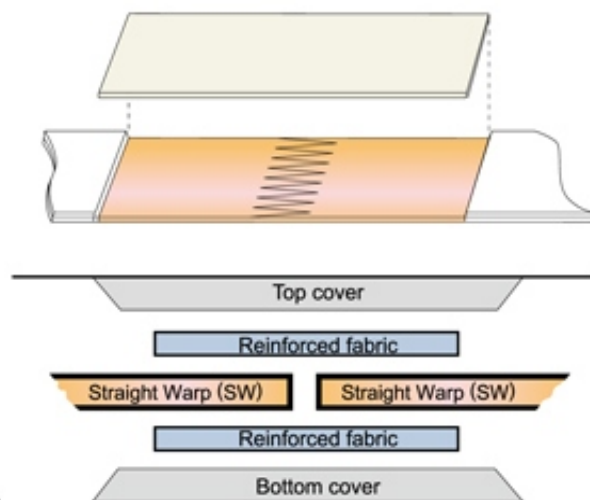
(Unit : mm)

	SW400 × 1P	SW600 × 1P	SW800 × 1P	SW1000 × 1P
A	500	500	600	600
B	400	400	450	450
C	300	300	350	350



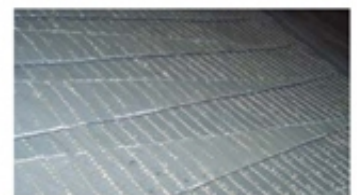
Belt splice

King with specialized experience in rubber conveyor belt, has concentrated on improving the splicing materials in order to make the spliced belts stronger and durable.

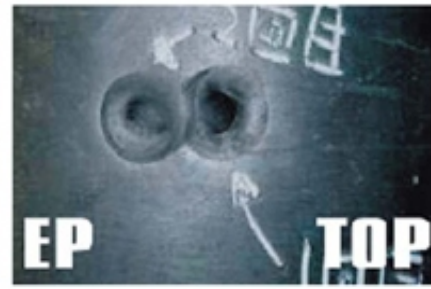


Splicing methods
Single ply : Finger splice
Double plies : Butt type splice

The pictures of finger splice



Impact Resistant Test



Comparison chart of impact resistant test

